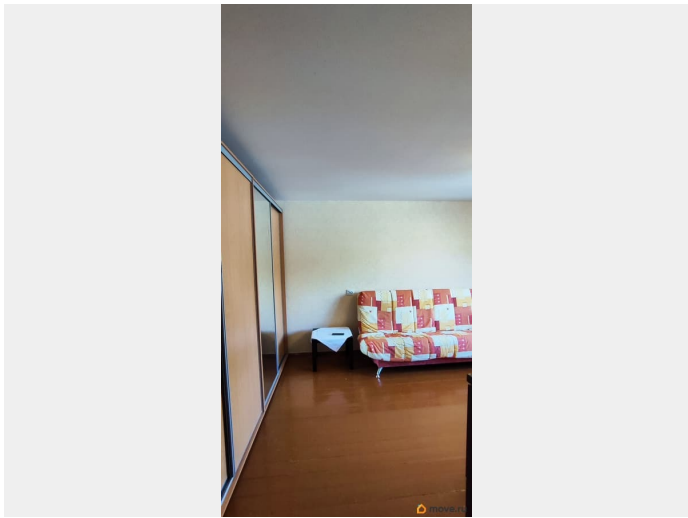
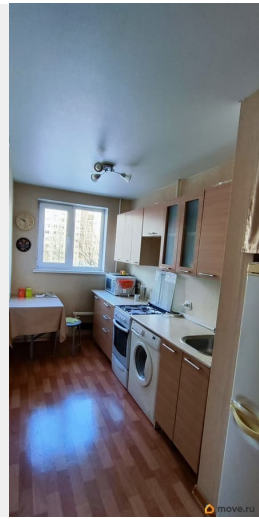


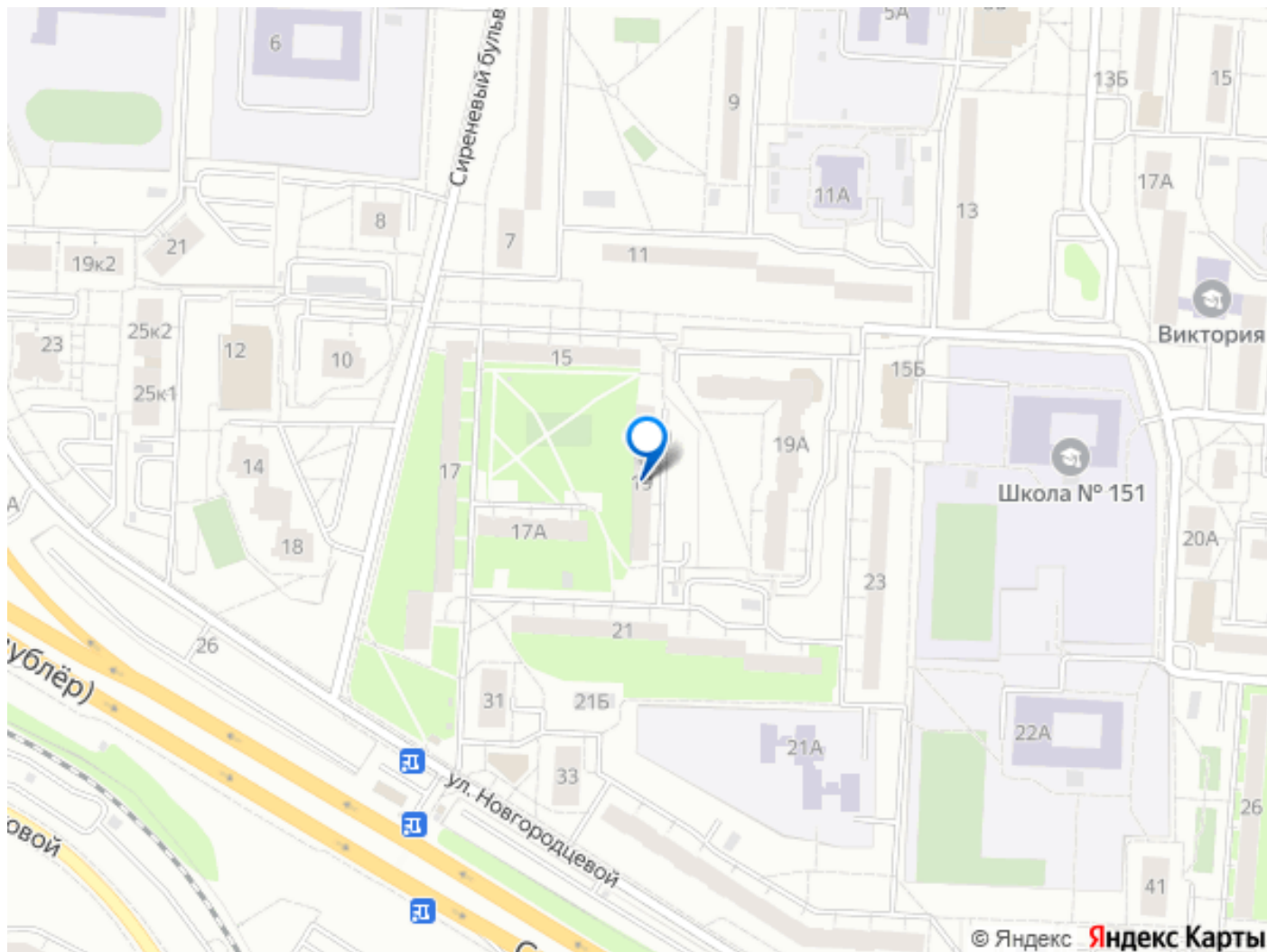
Описание

A hand-drawn floor plan of a house, likely for a real estate listing. The plan shows a large rectangular main area with a smaller rectangular section attached to its left side. The main area has a width of 20.4 and a length of 51.2, with a total area of 398. The smaller section has a width of 6.1 and a length of 18.9, with a total area of 292. The overall width of the house is 28.0, and the overall length is 286. The plan also shows a small square area of 180 and a small rectangular area of 286. The plan is drawn on a grid background. The dimensions are written in black ink, and the areas are written in red ink. The plan is oriented with the main area on the right and the smaller section on the left. The overall dimensions are 28.0 by 286. The overall area is 398 + 292 = 690. The plan is a simple line drawing with no furniture or other details.

Section	Width	Length	Area
Main Area	20.4	51.2	398
Attached Section	6.1	18.9	292
Small Square	13.0	13.0	180
Small Rectangle	2.0	143.0	286
Overall Dimensions	28.0	286	690







Move.ru - вся недвижимость России